



Striving for Excellence In  
Chemistry and Engineering

# Computer-Based Process Control

## Application of computer-based process controls for new systems and upgrades to existing water and waste treatment processes

### Value

- Expertise in water & waste processes
- Cost effective designs that meet specific requirements
- Customer service

### Experience

- Upgrades to existing controls
- Replacement of outdated electromechanical controls
- New Controls for new equipment and processes

### Services

- All programming by Finetech
- Data Acquisition, logging and trending
- Shop testing and simulation
- Training and start-up support
- Ongoing maintenance support
- Control Panel design and fabrication

### Processes

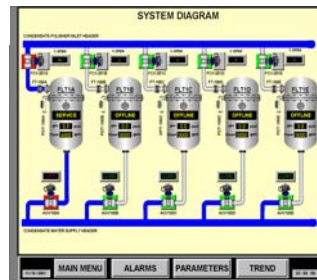
- Deep Bed Demineralizers
- Resin Cleaning and Regeneration Systems
- Filter Demineralizer Systems
- Filtration Systems

### Systems

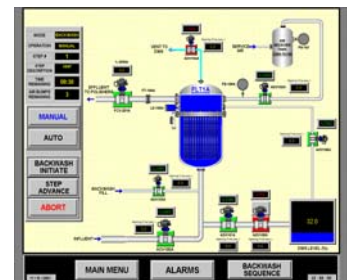
- Integrated control system includes a programmable logic controller and an Operator Interface (OI).
- For upgrades to existing controls, the PLC and OI may be housed in existing control panel if feasible.



Condensate Filtration System Control Panel



OI System Diagram



OI Backwash Diagram

- Redundant OIs offer flexibility and reliability
- Custom designed touch screens meet plant specific requirements, standards and preferences

### Hardware and Software

- PLC Hardware—Allen Bradley, GE Fanuc and Modicon
- PLC Software—RS Logix™, Versa Pro™, ProWorx-Plus™
- OI Hardware—Nematron, XYCOM, GE Fanuc, Allen Bradley
- OI Software—CTC Interact, GE Fanuc Cimplicity®, RSView™

### Communications

- Ethernet (TCP/IP Protocol)
- Twisted pair (ModBus plus, DeviceNet)
- RS 232 (SNP)
- Coaxial (ControlNet)
- Fiber Optic
- Wireless applications

We're on the Web  
[www.finetech.com](http://www.finetech.com)